

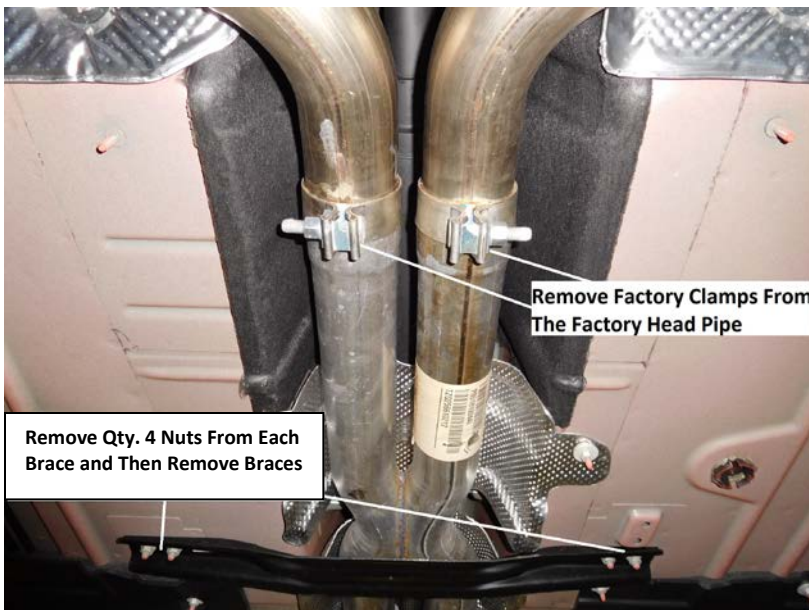


Installation Instructions for:
SYSTEM #717778
2017-2019 DODGE CHARGER R/T
5.7L · V8 HEMI ENGINE
Fits only vehicles with integrated
rear exhaust bezels

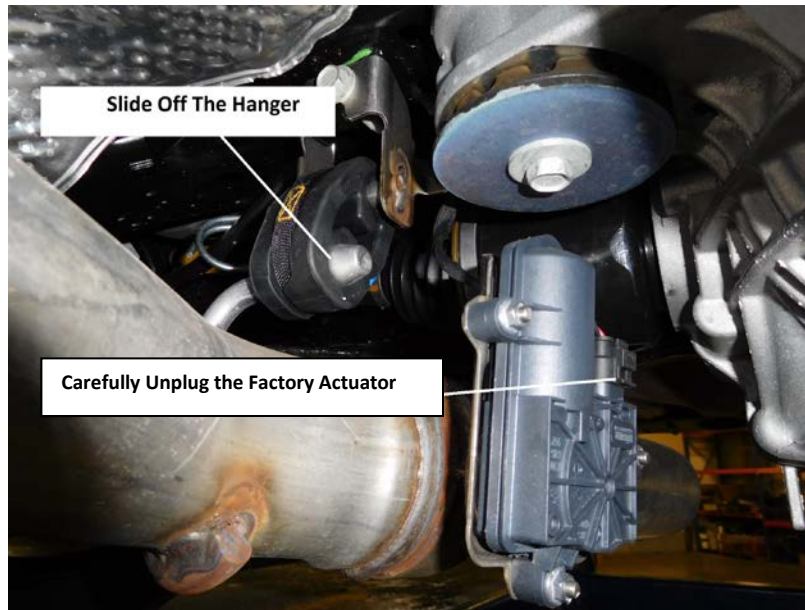
02/11/19

Removal:

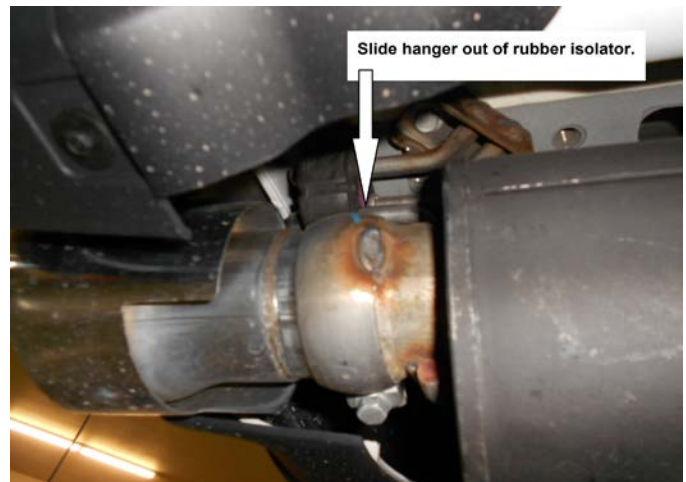
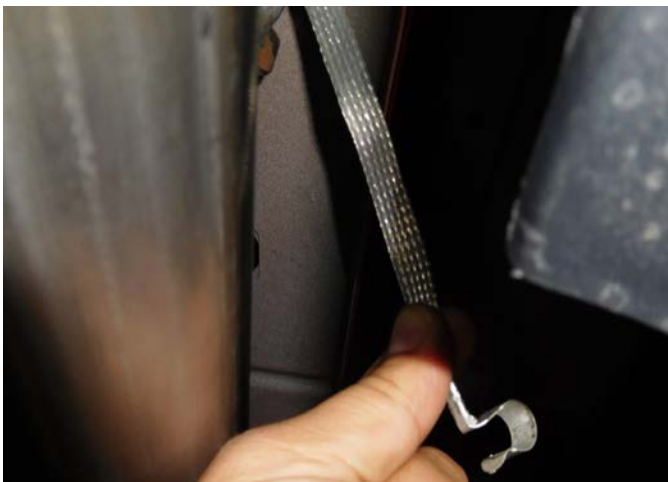
- 1) Raise the vehicle and support securely with stands. To ease the removal of the stock system, spray a penetrating lubricant onto the rubber hangers as well as the two clamped connections at the center of the vehicle.
- 2) Using a 15mm socket, loosen the clamps at the slip fit connections behind the catalytic converters. Also, using a 13mm socket, remove the bolts attaching the two floor braces in the center of the vehicle.



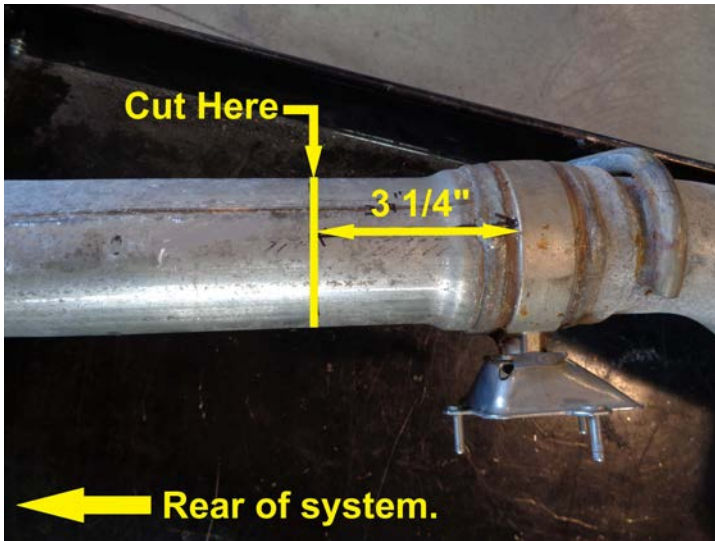
3) Place a stand under the rear of each tailpipe to support the rear of the system. Just forward of the rear differential, you will find two exhaust valve actuators, one mounted to the side of each tailpipe. Carefully unplug the wire from the actuator and tuck away for reconnection later.



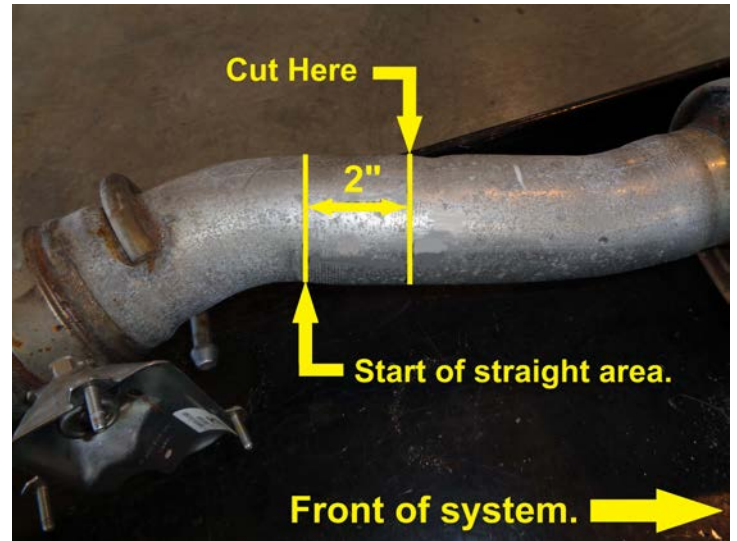
4) Slide the two hangers on each tailpipe out of the rubber mounts on the vehicle and unclip the grounding strap from the rear hanger on the right side of the vehicle. The stock system will come out as one large unit. Carefully lower the stands at the rear of the vehicle and with the help of an assistant slide the system back off of the head pipes and lower the system from the vehicle.



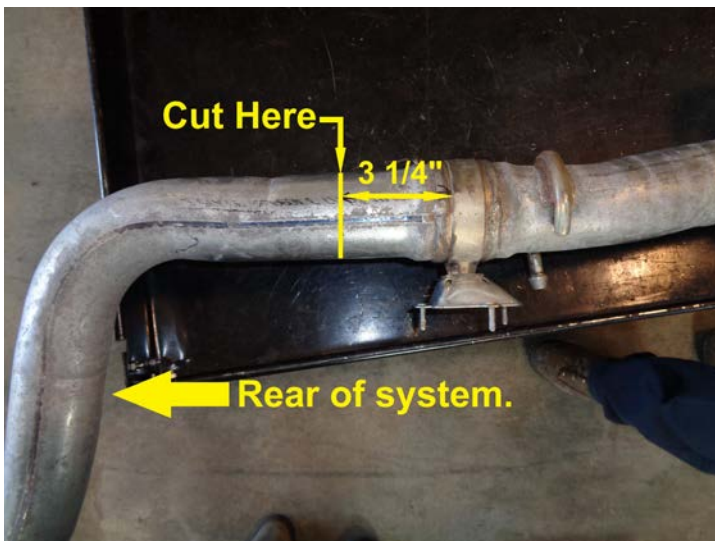
5) Once the factory system is out of the vehicle, turn the system over so that the hangers are to the ground. Then using the measurements on the diagrams below, carefully cut the factory exhaust valves from the exhaust system, these will be re-used with the new Flowmaster system.



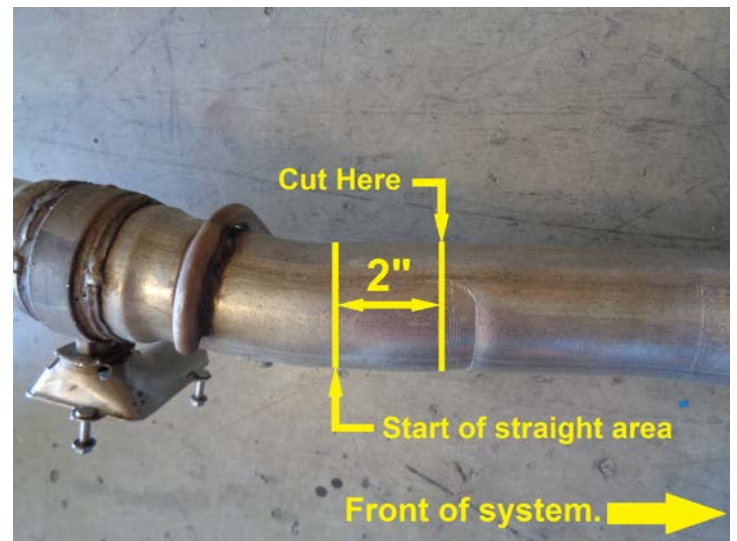
On the passenger side of the system, Measure back 3 1/4" from the cast body of the exhaust valve and make a mark. Using a hacksaw or sawsall, cut the pipe through on this mark. After cutting, remove any burrs from the end of the pipe using a file or die grinder.



At the front of the passenger side valve, locate the start of the straight area and measure forward 2". Make a mark. Using a hacksaw or sawsall, cut the pipe through on this mark. After cutting, remove any burrs from the end of the pipe using a file or die grinder.



On the drivers' side of the system, Measure back 3 1/4" from the cast body of the exhaust valve and make a mark. Using a hacksaw or sawsall, cut the pipe through on this mark. After cutting, remove any burrs from the end of the pipe using a file or die grinder.



At the front of the drivers' side valve, locate the start of the straight area and measure forward 2". Make a mark. Using a hacksaw or sawsall, cut the pipe through on this mark. After cutting, remove any burrs from the end of the pipe using a file or die grinder.

Installation:

1) Begin the installation by placing a supplied 2-1/2" clamp onto each of the inlets of the Scavenger pipe #26657M. Then place the Scavenger pipe onto the back of the stock head pipes with the Flowmaster embossing in the center facing the ground. Level and center the assembly in the drive line tunnel and support with a stand. Scavenger pipe should slide over factory head pipe about 2 inches. Tighten the two clamps enough to hold, but still allow for adjustment. Also re-install the floor braces back into place to support the Scavenger pipe in place. Once the system is adjusted the Scavenger assembly should have about 1/2" of clearance over the two body braces.



2) Place a supplied 3" clamp onto the inlet neck of both mufflers. Slide the mufflers onto the back of the Scavenger pipe assembly about 1-3/4" and support with stands. Level the mufflers and tighten the clamps enough to hold, but still allow for adjustment.



3) Place a supplied 3" clamp onto the left muffler outlet. Place the left valve adapter # **26660M** into the muffler outlet and tighten the clamp enough to hold but still allow for adjustment. Install a 2 3/4" clamp onto the back of the valve adapter, Then place the Drivers side exhaust valve into the back of the adapter and connect the hanger on the exhaust valve to the rubber mount on the vehicle. Place a 2 3/4" clamp onto the front of left tailpipe # **26662M**, then slide onto the back of the exhaust valve. Connect the hanger at the rear of the tailpipe to the rubber mount on the vehicle. Adjust the adapter, valve and tailpipe to the desired position. Tighten the clamps enough to hold but still allow for adjustment.



4) Place a supplied 3" clamp onto the right muffler outlet. Place the right valve adapter # **26661M** into the muffler outlet and tighten the clamp enough to hold but still allow for adjustment. Install a 2 3/4" clamp onto the back of the valve adapter, Then place the passenger side exhaust valve into the back of the adapter and connect the hanger on the exhaust valve to the rubber mount on the vehicle. Place a 2 3/4" clamp onto the front of right tailpipe # **26663M**, then slide onto the back of the exhaust valve. Connect the hanger at the rear of the tailpipe to the rubber mount on the vehicle. Adjust the adapter, valve and tailpipe to the desired position. Tighten the clamps enough to hold but still allow for adjustment.





5) Reconnect the two electrical plugs removed in step 3 of the removal instructions back onto the tailpipe actuators.



6) Adjust the position of the Scavenger pipe, mufflers and tailpipes to provide a satisfactory fit. A minimum of 1/2" clearance around all parts of the system must be maintained; while keeping suspension travel and vibration in mind. After adjustments have been made, you may now securely tighten all clamps. Also reconnect the grounding clip to the rear hanger on the right side tailpipe.

7) For a more secure installation, we recommend welding all slip-fit connections.

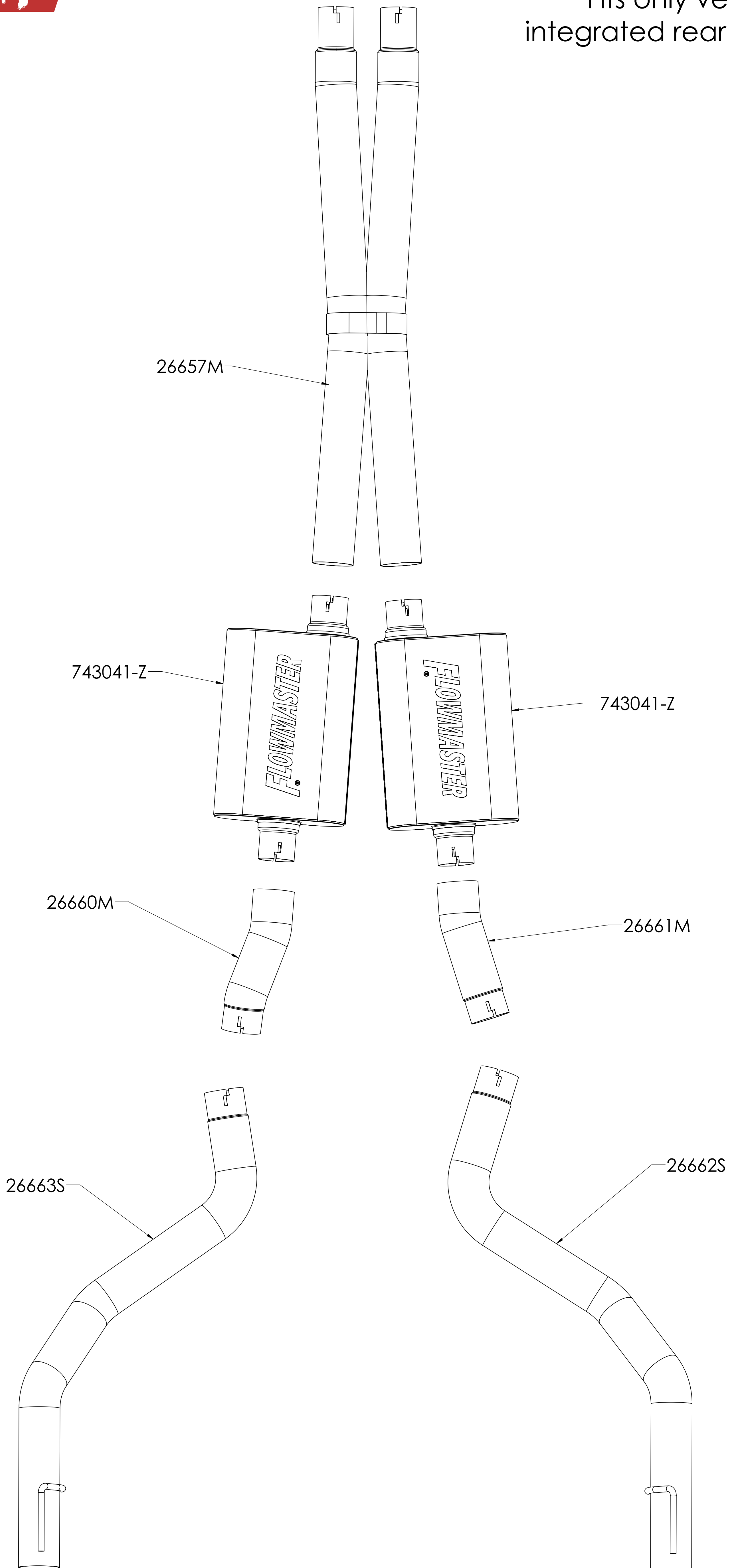
PACKING LIST

<u>Qty</u>	<u>Description</u>	<u>Part#</u>
2	Mufflers	743041-Z
1	Scavenger Assembly	26657M
1	Left Valve Adapter Pipe	26660M
1	Right Valve Adapter Pipe	26661M
1	Left Tailpipe Assembly	26662M
1	Right Tailpipe Assembly	26653M
1	Hardware Kit	PK887
2	2-1/2" Clamp	MC250BS
4	2-3/4" Clamp	MC234BS
4	3" Clamp	MC300BS



Installation diagram for:
SYSTEM # 717778
2017-2019 DODGE CHARGER R/T
5.7L V8

Fits only vehicles with
integrated rear exhaust bezels



Technical support (707) 544-4761